



AGRONOMY



ENERGY



FEED



GRAIN



SOFTWARE DEV.

NEW COOPERATIVE INC. NEW®

FARMER FOCUSED. MEMBER DRIVEN.

SINCE 1973
2023



NEW COOPERATIVE INC.

- Headquartered In Fort Dodge, IA
- Farmer-Owned Cooperative Formed In 1973.
- Over 8,000 Member Owners
- 66 Locations In Iowa
- Grain, Agronomy, Energy, Feed, And Precision Ag
- 1,000 Full-Time Employees



1,010

Full Time Employees

250-350

Part Time/Seasonal Employees



Agronomy
298



Grain
197



Feed
163



Energy
72



Transportation
138



Sales
50



NAPA/Lumberyard
14

Human Resources





NEW
COOPERATIVE INC.
N L W™



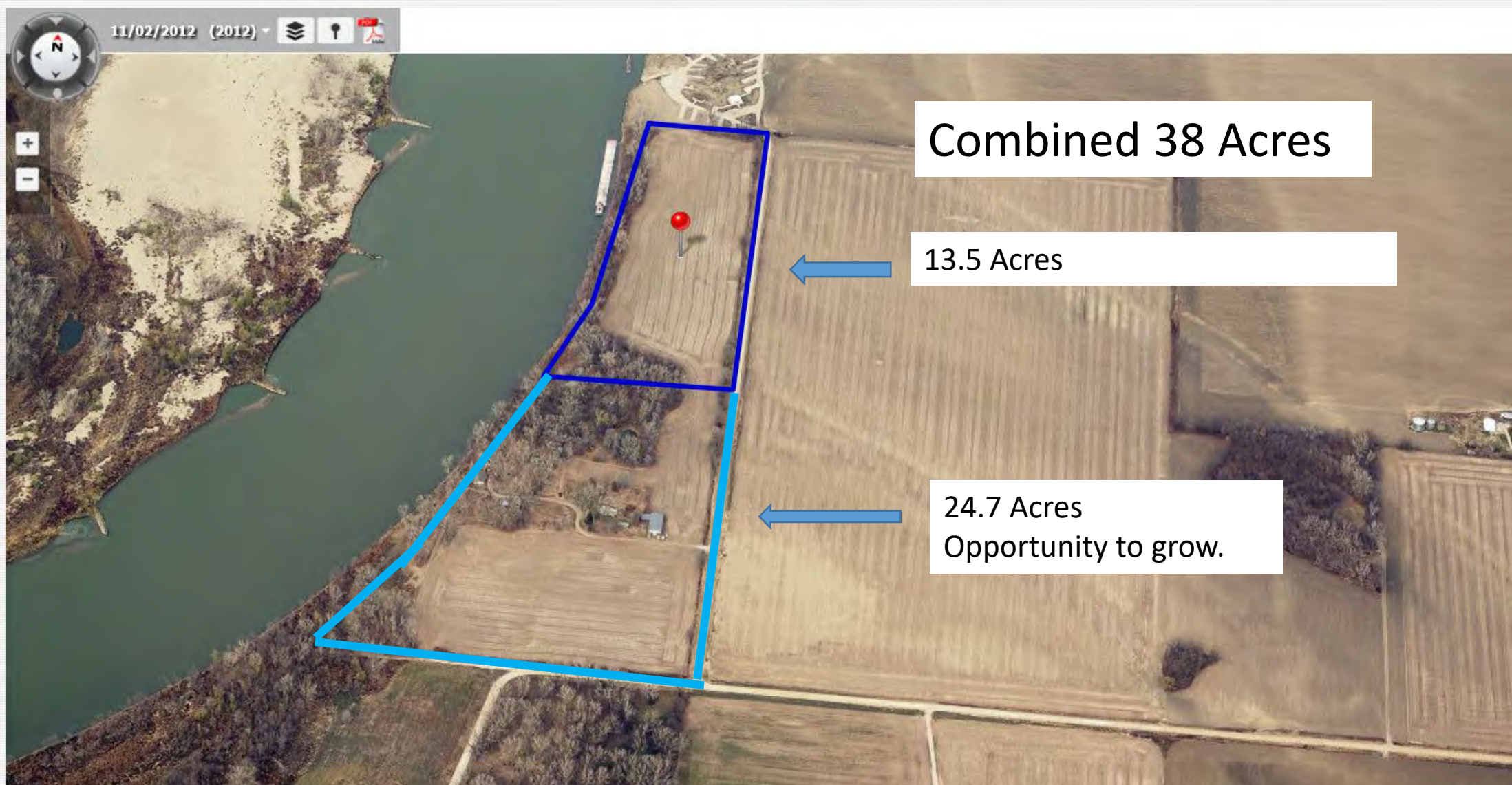
Port of Blencoe

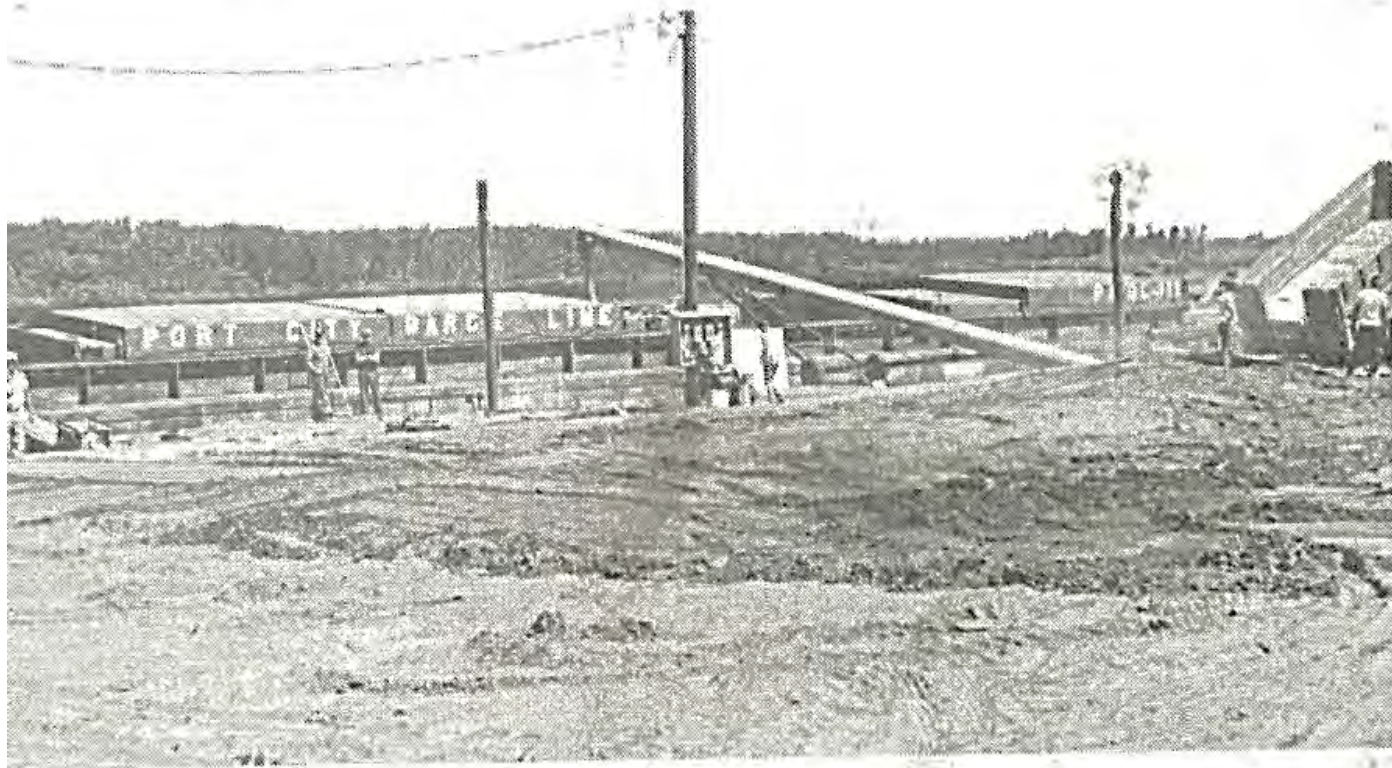
The Port of Blencoe

- Currently only active Iowa port on Missouri River
- 55 Miles to Omaha
- 44 Miles to Sioux City
- Missouri River
Mile Marker 680.5

Figure 6.8: Iowa navigable waterways







Permitted in
1938 - Last
Utilized in
2003

September 2020



Construction Began October 2020



November 2020



December 2020



March 2021





September 2020



Port of Blencoe Today



September 2022

Hard surface Road 2.5 miles from Interstate 29

3 miles from UP Railroad in Blencoe



September 2022

Hard surface Road 2.5 miles from Interstate 29
3 miles from UP Railroad in Blencoe



2021		
UPSTREAM	Barges	Tons
Dark Map	16	23,972.65
Blonde MAP	7	10,626.62
Total Potash	6	9,009.78
Total DAP	3	1,410.40
Total NPSZN	2	4,697.01
Total Rock	1	2,995.00
	35	52,711.46

2022		
UPSTREAM	Barges	Tons
Total Map	13	17,329.30
Total Potash	13	18,224.40
Total AMS	2	2,659.98
Total DAP	0	0.00
Total NPSZN	0	0.00
Total Rock	3	4,379.56
	31	42,593.24

2023		
UP Stream	Barges	Tons/Bu
Total Map	18	24,300
Total Potash	15	20,250
Total AMS	2	2,600
Total Rock	4	5,520
	39	52,670

2021		
Down Stream	Barges	Tons
DDG's	15	21,907.00
Soybeans	7	10,433.00
Corn	5	5,985.00
Soy Meal	1	1,548.00
Departed MT	8	
	35	39,873.00

2022		
Down Stream	Barges	Tons
DDGs	10	13,877.00
Scrap Iron	7	10,980.00
Soybeans	5	7,078.00
Departed MT	9	
	31	31,935.00

2023		
Down Stream	Barges	Tons/Bu
Soybeans	14	21,000
Bean Meal	10	14,000
Scrap Steel	7	9,800
Departed MT	5	0
	36	44,800

Port Of Blencoe – Vision For The Future

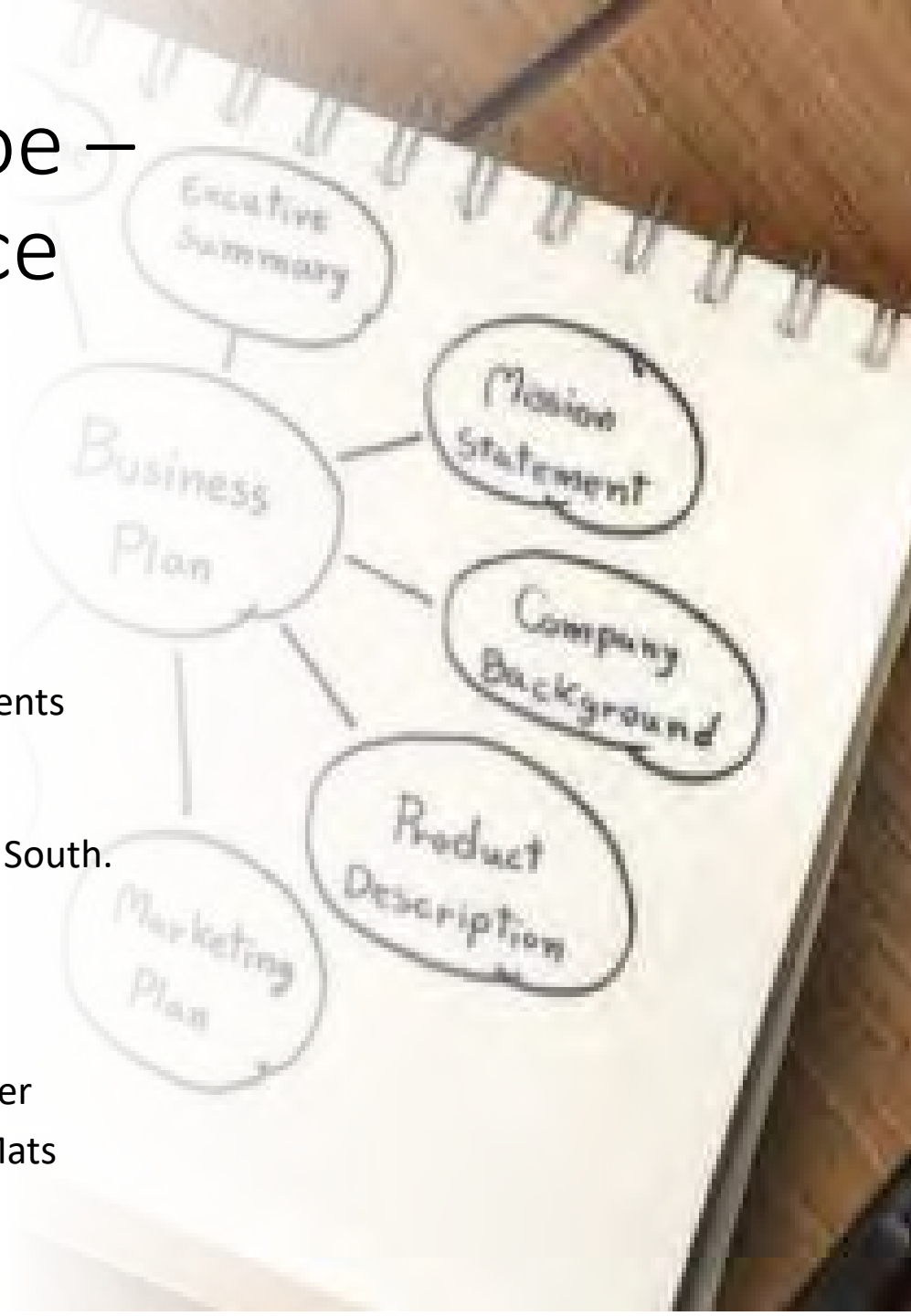
- How Do We Grow Revenue?
- How Can We Produce Revenue 365 Days/Yr.
- What Do We Think The Port Will Look Like?
- What Needs To Be Done To Attract Funding For Development ?
- Is There An Opportunity For Large Site Development.
- How Do We Get There?
 - What Is The Financial Impact?



**THE FUTURE
IS NOW**

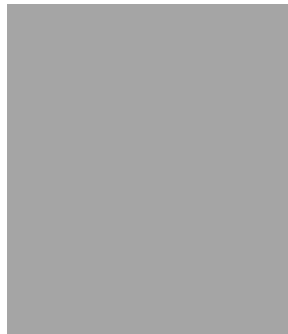
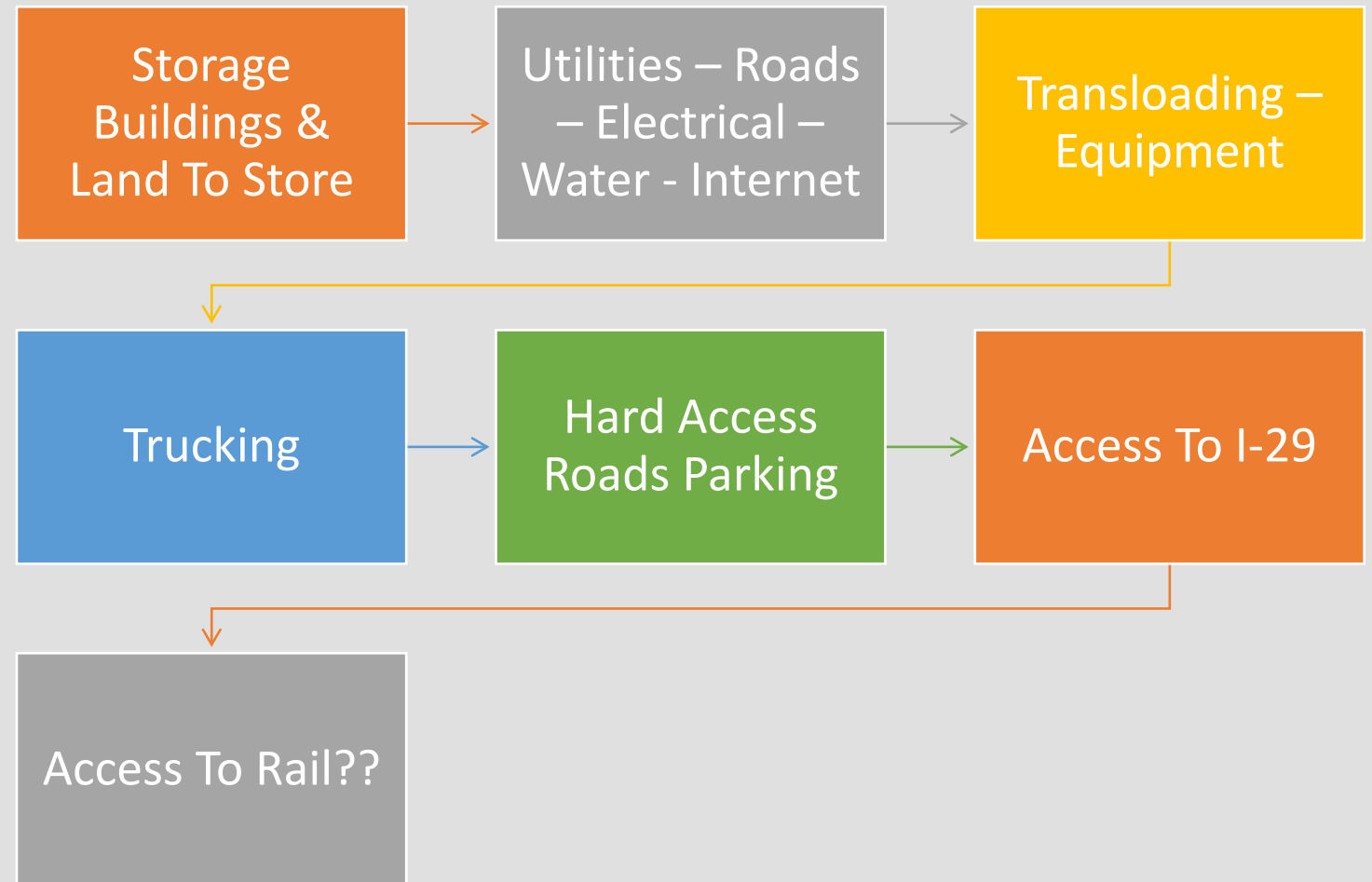
Port Of Blencoe – Over The Fence Opportunities

- – Quality Liquid Feed
 - 15-25,000 Tons Of Urea
 - Liquid Molasses.
- - Concrete Mix
- - Super Sacks Of Feed Ingredrients
- - Pipe
 - Plastic Pipe Manufacturer
 - Council Bluffs – Shipping South.
- - Anhydrous, UAN
- - Corn & Soy Oil.
- - Steel Coils
- - Additional 20,000 ton fertilizer
- - Michigan Terminals- Crane Mats



What Do These Companies Need?

How Do We Fund Needs ?



Port Of Blencoe – A Vision For The Future



- How Do We Get There.

1. Develop a Port Authority?
2. Option To Purchase surrounding ground?
3. Local Government Support?
4. Partner with Development Group?
5. Hire A Full-Scale Developer?



McCandless Cleghorn

Missouri River

NEBRASKA

Huff-Warner Access Area

295th St

295th St

E60

Hazel Ave

Hazel Ave

29

29

305th St

305th St

305th St

305th St

Google Earth



THANK YOU